



报告编号: Report No.	LAB2110565-01
报告版本: Report Version	V1
报告总页数: Total Pages	8

深圳市瑞丰光电子股份有限公司实验中心
SHENZHEN REFOND OPTOELECTRONICS CO., LTD. LAB CENTER

检测报告
Testing Report

样品名称
Product No. RF-A1F30-W1DD-B1

委托单位:
Application 深圳市瑞丰光电子股份有限公司_车用LED事业部_工程部_NPI课

检测项目:
Testing Item 高温老化

检测报告

Testing Report

样品品名 Product No.	<u>RF-A1F30-W1DD-B1</u>	样品批次 Batch No.	<u>SC17-210800043</u>
样品外观 Sample Status	<u>外观正常</u>	样品数量 Samples Quantity	<u>10</u>
委托人 Principal	<u>李先辉</u>	联系电话 Tel	<u>15755057052</u>
是否有分包 Subcontract or not	<u>否</u>	样品接收日期 Samples Received Date	<u>2021/10/30</u>

检测依据标准 电工电子产品环境试验 第2部分：试验方法 试验B：高温 GB/T 2423.2-2008,
 Test Specification: LED的测量 CIE127: 2007

检测结论 [V]通过 []不做判定 []未通过
 Test Conclusion: Pass NA Fail

编制 刘在权 职务 检测员 日期 2021/12/30
 Prepared By Title Date

批准 刘琪 职务 授权签字人 日期 2021/12/31
 Approved By Title Date

说明/Instructions:

- 1.报告无编制、批准人签字无效。Report is invalid if no signature for the captions "Prepared by" and "Approved by".
- 2.未经实验中心书面批准，不得部分复制本报告。Without the written approval of the laboratory may not be copied part of this report.
- 3.报告涂改无效。Report is invalid if altered.
- 4.无特别说明时，检测结果仅与被检测的样品有关。If no special notes in this report, the results are only related to the tested specimens.

5.报告版权属瑞光所有，未经书面批准，不得翻印。This report shall not be reproduced without the written approval of laboratory and Refond owns the Copyright of all the reports.

序号	Φ (1m)					Lumen Maintenance (%)				
	0h	168h	336h	504h	1000h	0h	168h	336h	504h	1000h
1#	45.24	45.62	45.84	46.22	46.15	100.00%	100.84%	101.33%	102.17%	102.01%
2#	43.91	45.27	44.23	45.47	43.94	100.00%	103.10%	100.73%	103.55%	100.07%
3#	44.96	46.26	46.24	45.70	45.99	100.00%	102.89%	102.85%	101.65%	102.29%
4#	42.57	43.66	43.57	43.94	43.17	100.00%	102.56%	102.35%	103.22%	101.41%
5#	45.73	45.47	46.73	46.90	44.97	100.00%	99.43%	102.19%	102.56%	98.34%
6#	44.42	44.66	45.24	45.38	45.30	100.00%	100.54%	101.85%	102.16%	101.98%
7#	44.97	46.80	46.46	47.55	47.16	100.00%	104.07%	103.31%	105.74%	104.87%
8#	41.83	42.55	42.71	43.32	42.59	100.00%	101.72%	102.10%	103.56%	101.82%
9#	47.15	46.92	49.02	48.89	48.09	100.00%	99.51%	103.97%	103.69%	101.99%
10#	44.99	45.64	46.05	45.76	45.72	100.00%	101.44%	102.36%	101.71%	101.62%
Min	41.83	42.55	42.71	43.32	42.59	100.00%	99.43%	100.73%	101.65%	98.34%
Max	47.15	46.92	49.02	48.89	48.09	100.00%	104.07%	103.97%	105.74%	104.87%
Avg	44.58	45.29	45.61	45.91	45.31	100.00%	101.61%	102.30%	103.00%	101.64%
Spec	NA					80%~120%				

序号	VF (V)					ΔVF (V)			
	0h	168h	336h	504h	1000h	168h	336h	504h	1000h
1#	3.02	3.00	3.00	3.00	3.00	-0.02	-0.02	-0.02	-0.02
2#	3.06	3.03	3.03	3.04	3.04	-0.03	-0.03	-0.02	-0.02
3#	3.03	3.00	3.01	3.00	3.00	-0.02	-0.02	-0.03	-0.02
4#	3.01	2.99	2.99	2.99	2.99	-0.02	-0.01	-0.02	-0.02
5#	3.01	2.99	3.00	2.99	2.99	-0.02	-0.01	-0.02	-0.02
6#	3.01	2.99	3.00	2.99	2.99	-0.03	-0.02	-0.02	-0.02
7#	3.03	3.01	3.01	3.00	3.01	-0.02	-0.02	-0.03	-0.02
8#	2.99	2.99	2.98	2.99	2.98	-0.01	-0.01	-0.01	-0.02
9#	3.02	3.00	3.00	3.00	3.01	-0.01	-0.02	-0.01	-0.01
10#	3.03	3.00	3.01	3.01	3.01	-0.03	-0.02	-0.02	-0.02
Min	2.99	2.99	2.98	2.99	2.98	-0.03	-0.03	-0.03	-0.02
Max	3.06	3.03	3.03	3.04	3.04	-0.01	-0.01	-0.01	-0.01
Avg	3.02	3.00	3.00	3.00	3.00	-0.02	-0.02	-0.02	-0.02
Spec	NA					-0.2~0.2			

序号	IF (mA)				
	0h	168h	336h	504h	1000h
1#	120.00	120.00	120.00	120.00	120.00
2#	120.00	120.00	120.00	120.00	120.00
3#	120.00	120.00	120.00	120.00	120.00
4#	120.00	120.00	120.00	120.00	120.00
5#	120.00	120.00	120.00	120.00	120.00
6#	120.00	120.00	120.00	120.00	120.00
7#	120.00	120.00	120.00	120.00	120.00
8#	120.00	120.00	120.00	120.00	120.00
9#	120.00	120.00	120.00	120.00	120.00
10#	120.00	120.00	120.00	120.00	120.00
Min	120.00	120.00	120.00	120.00	120.00
Max	120.00	120.00	120.00	120.00	120.00
Avg	120.00	120.00	120.00	120.00	120.00

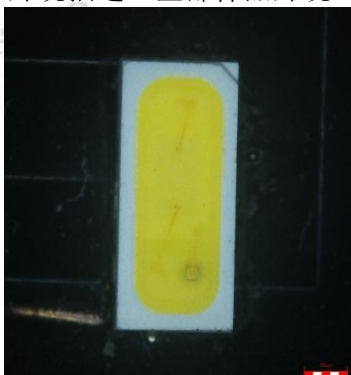


序号	x					Δx			
	0h	168h	336h	504h	1000h	168h	336h	504h	1000h
1#	0.2798	0.2801	0.2805	0.2805	0.2802	0.0003	0.0007	0.0007	0.0004
2#	0.2769	0.2771	0.2770	0.2769	0.2756	0.0002	0.0001	0.0000	-0.0013
3#	0.2778	0.2779	0.2783	0.2783	0.2774	0.0001	0.0005	0.0005	-0.0004
4#	0.2827	0.2827	0.2831	0.2828	0.2816	0.0000	0.0004	0.0001	-0.0011
5#	0.2778	0.2778	0.2781	0.2778	0.2769	0.0000	0.0003	0.0000	-0.0009
6#	0.2814	0.2815	0.2820	0.2818	0.2809	0.0001	0.0006	0.0004	-0.0005
7#	0.2834	0.2836	0.2842	0.2842	0.2833	0.0002	0.0008	0.0008	-0.0001
8#	0.2774	0.2777	0.2782	0.2779	0.2771	0.0003	0.0008	0.0005	-0.0003
9#	0.2823	0.2823	0.2831	0.2830	0.2821	0.0000	0.0008	0.0007	-0.0002
10#	0.2813	0.2813	0.2820	0.2818	0.2808	0.0000	0.0007	0.0005	-0.0005
Min	0.2769	0.2771	0.2770	0.2769	0.2756	0.0000	0.0001	0.0000	-0.0013
Max	0.2834	0.2836	0.2842	0.2842	0.2833	0.0003	0.0008	0.0008	0.0004
Avg	0.2801	0.2802	0.2807	0.2805	0.2796	0.0001	0.0006	0.0004	-0.0005
Spec	NA					-0.02~0.02			

序号	y					Δy			
	0h	168h	336h	504h	1000h	168h	336h	504h	1000h
1#	0.2657	0.2679	0.2680	0.2680	0.2680	0.0022	0.0023	0.0023	0.0023
2#	0.2594	0.2613	0.2604	0.2599	0.2582	0.0019	0.0010	0.0005	-0.0012
3#	0.2616	0.2635	0.2637	0.2635	0.2625	0.0019	0.0021	0.0019	0.0009
4#	0.2727	0.2745	0.2745	0.2739	0.2723	0.0018	0.0018	0.0012	-0.0004
5#	0.2628	0.2647	0.2646	0.2639	0.2627	0.0019	0.0018	0.0011	-0.0001
6#	0.2715	0.2734	0.2736	0.2730	0.2720	0.0019	0.0021	0.0015	0.0005
7#	0.2749	0.2771	0.2775	0.2774	0.2762	0.0022	0.0026	0.0025	0.0013
8#	0.2612	0.2636	0.2638	0.2632	0.2625	0.0024	0.0026	0.0020	0.0013
9#	0.2730	0.2746	0.2755	0.2752	0.2740	0.0016	0.0025	0.0022	0.0010
10#	0.2684	0.2699	0.2705	0.2701	0.2687	0.0015	0.0021	0.0017	0.0003
Min	0.2594	0.2613	0.2604	0.2599	0.2582	0.0015	0.0010	0.0005	-0.0012
Max	0.2749	0.2771	0.2775	0.2774	0.2762	0.0024	0.0026	0.0025	0.0023
Avg	0.2671	0.2691	0.2692	0.2688	0.2677	0.0019	0.0021	0.0017	0.0006
Spec	NA					-0.02~0.02			

10. 试验结果/Test Result:

全部样品各项参数均在判定标准范围内。
外观描述: 全部样品外观正常。



11. 试验结论/Test conclusion: 合格

12. 备注/Remark: N/A

.....报告结束/END.....